

Symbols that represent rhythms

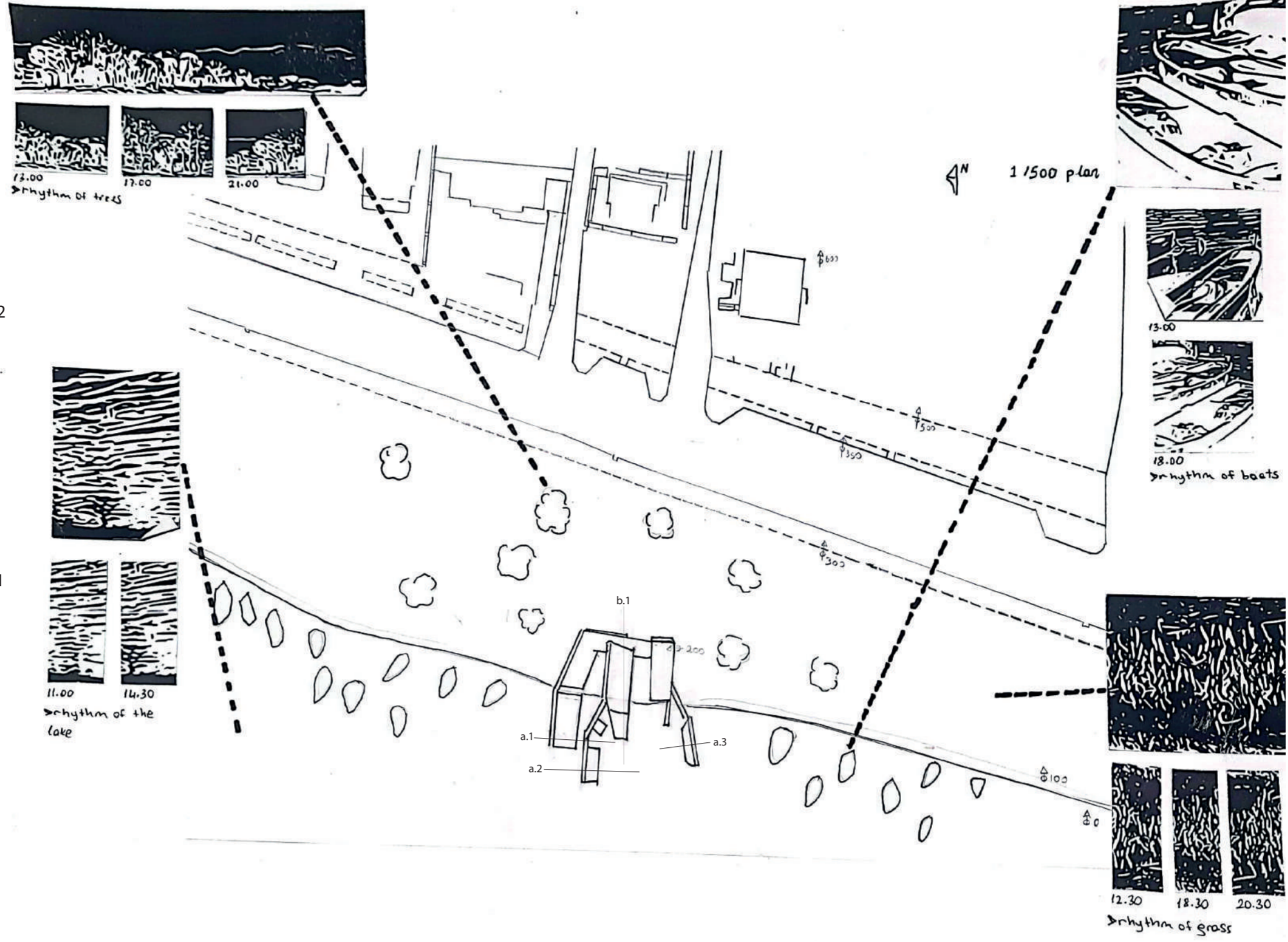
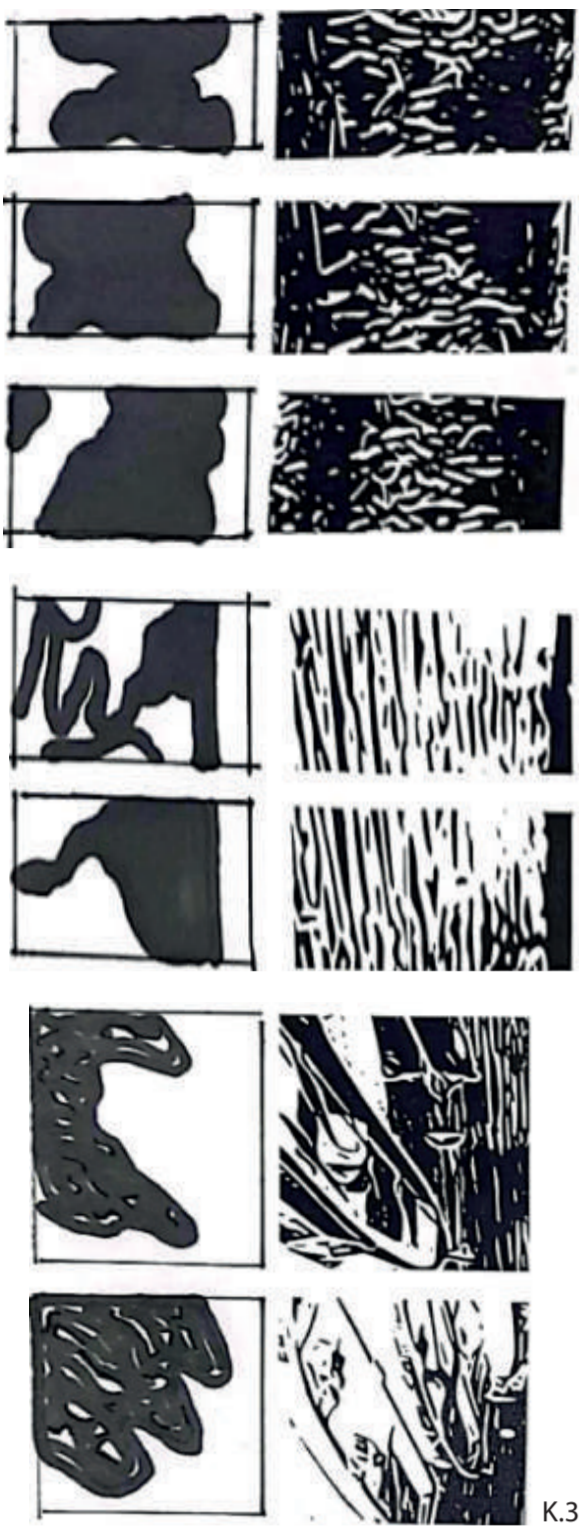
1/500 situation plan

The Project Overview:

The symphony of nature on the shores of Lake Iznik caresses our ears, nourishes our soul and inspires our creativity. In this unique environment, music education adapts to the rhythms of nature, activates our senses and creates a flow towards music with certain repetitions and pauses. The tranquil beauty and natural rhythm of Lake Iznik offers environment for music education. In this environment, establishing a structure where the rhythms of nature.

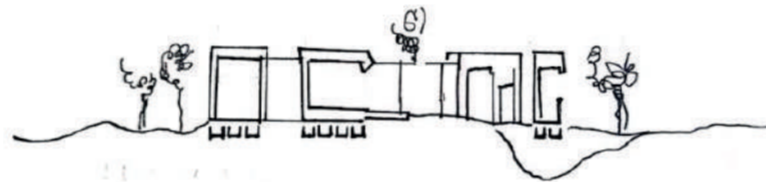
Explanation of Transcripts:

The project site underwent a thorough rhythmic analysis during the design phase. This analysis encompassed both visual and auditory rhythms. The patterns formed by the observed waves, soil, mountains, trees, and harbor stones were examined.

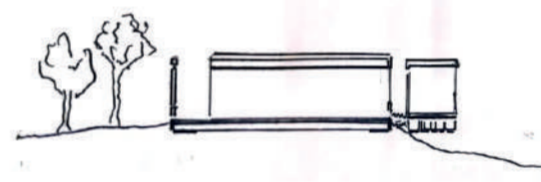


# Nicaea Rhythmcatcher

## iznik/Bursa



1/500 section 1 (a.1-a.2-a.3)

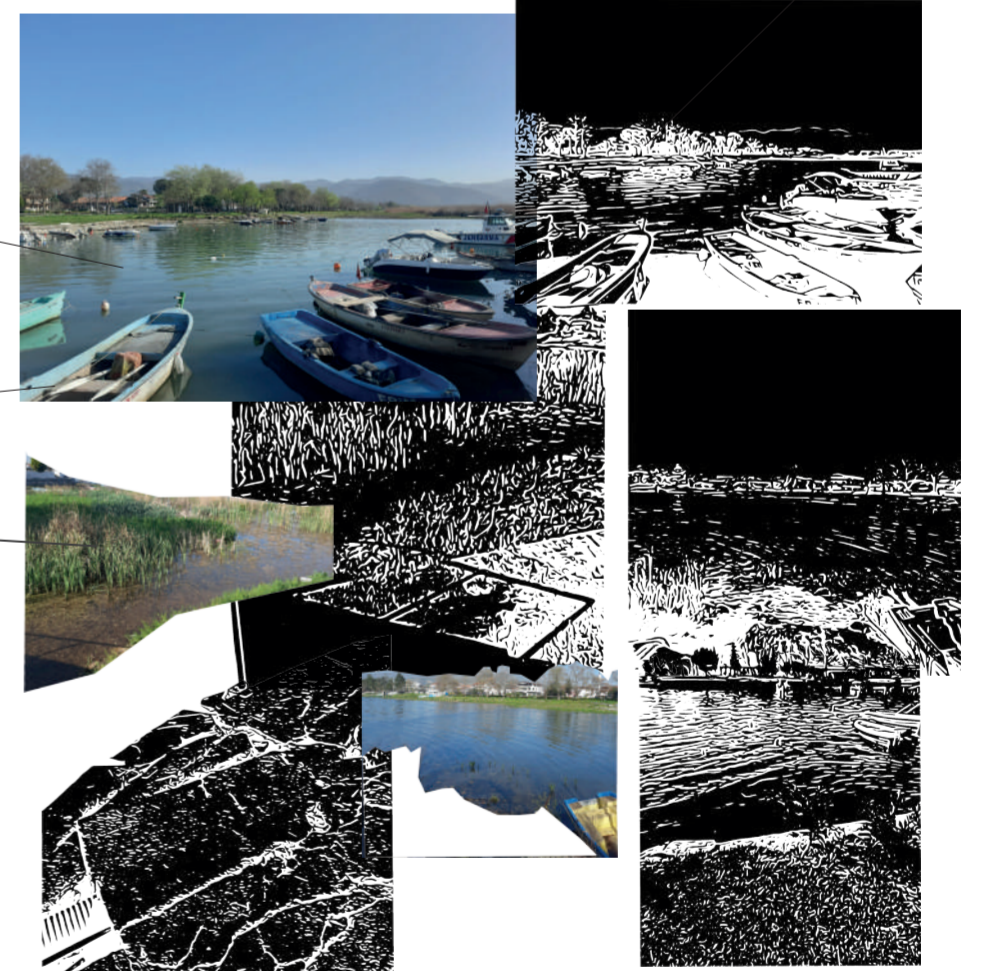


1/500 section 2 (b.1)

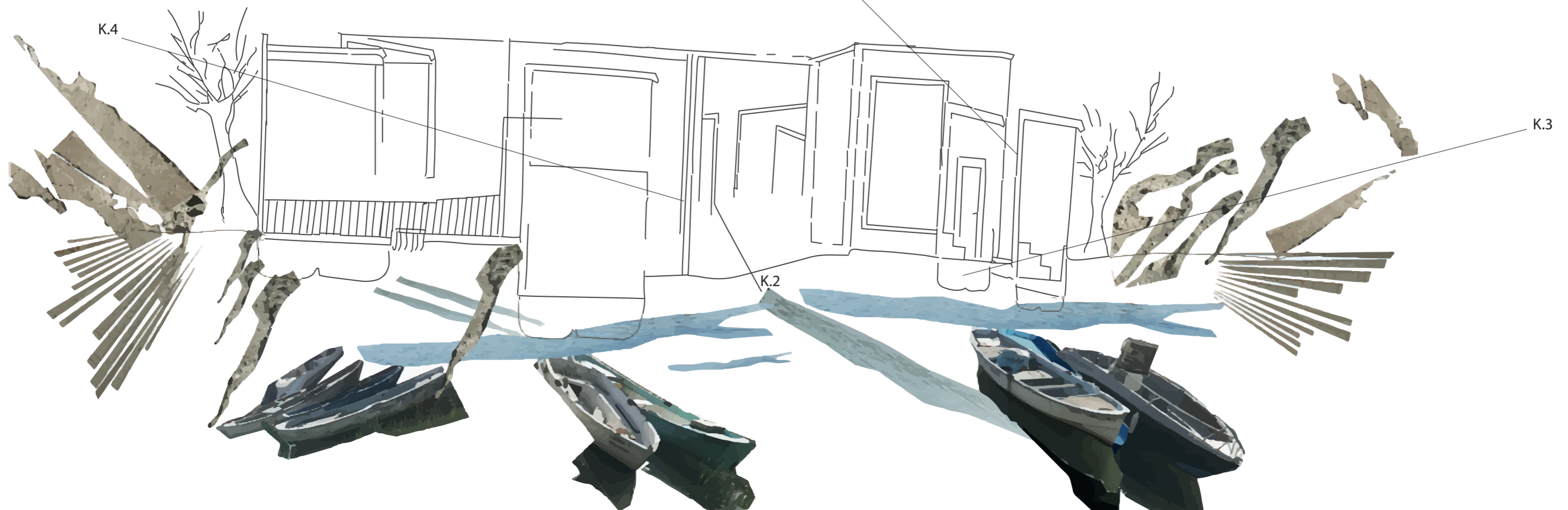
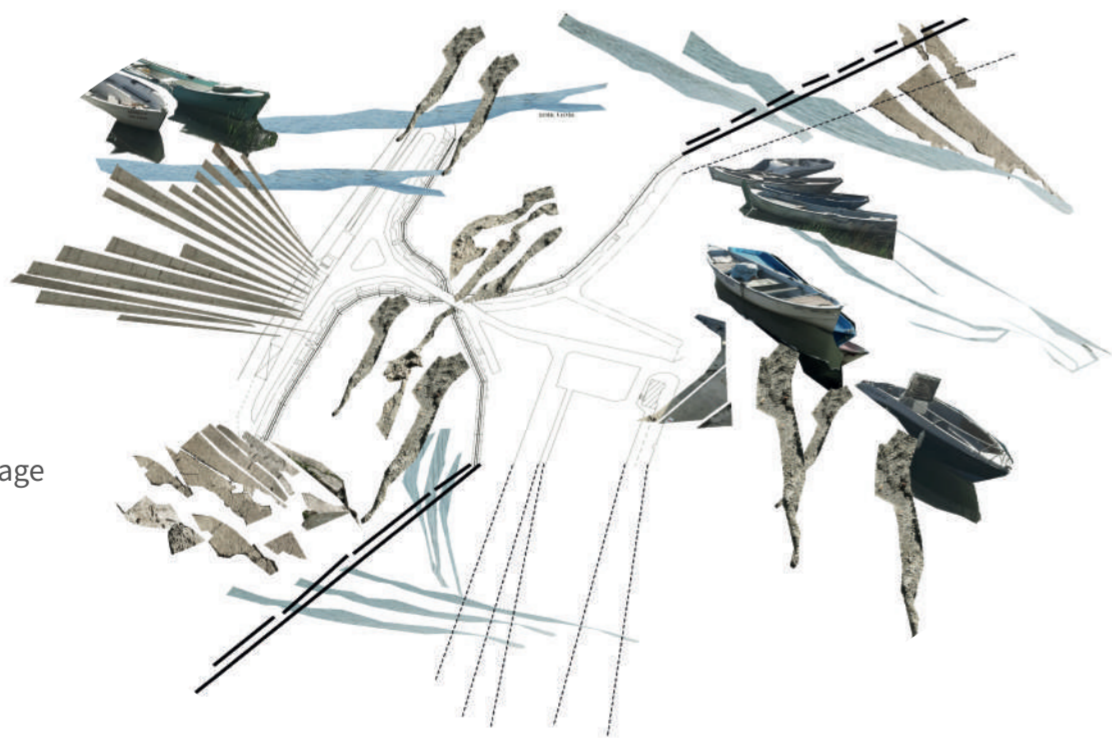
About Education System:

The basis of this project is the discovery of the rhythms observed in the educational space and the blending of these rhythms with spatial design. Rhythms observed in different venue sections are recorded and turned into music with the help of instructors in workshops.

Transcript images from photos

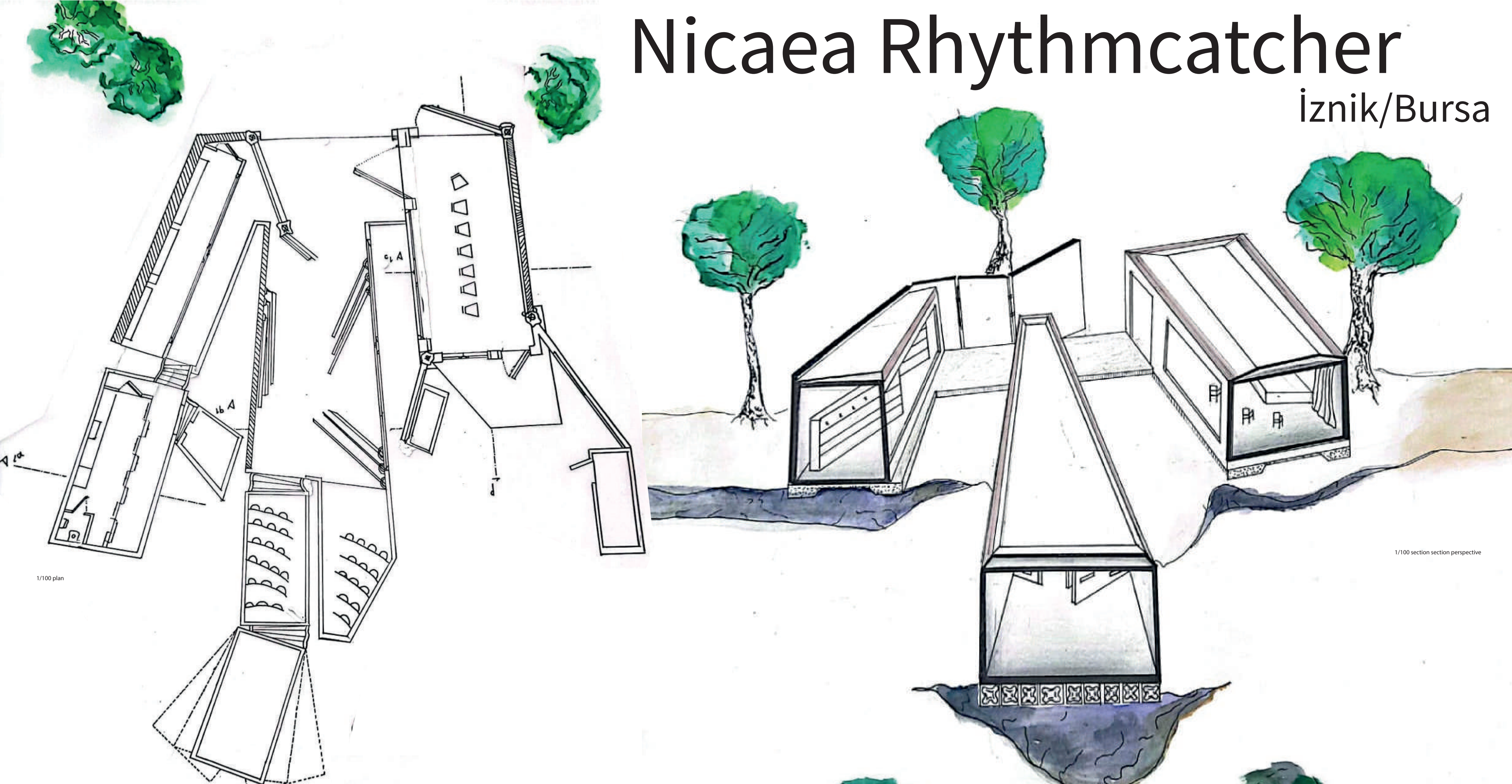


1/500 collage



# Nicaea Rhythmcatcher

İzmir/Bursa



### Explanation of diagram-space- movement connection:

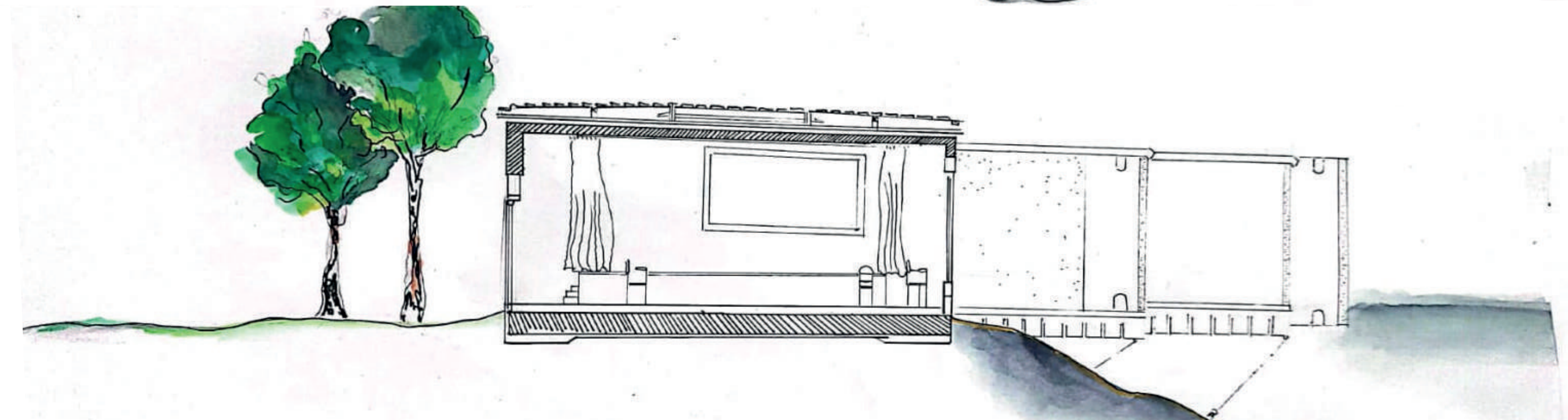
The panels, which reflect the vibrations in the lake like a metronome, emphasize the rhythmic character of the space and represent horizontal fragmentation by symbolizing the elevation differences of the lake. The surrounding rhythms are matched with different parts of the space, providing a harmonious experience. This matching is achieved through visual and auditory elements.

The movement diagram offers flexible and open-ended movement directions, allowing users to freely explore the space. In this way, users can draw their own routes and explore different corners of the space.



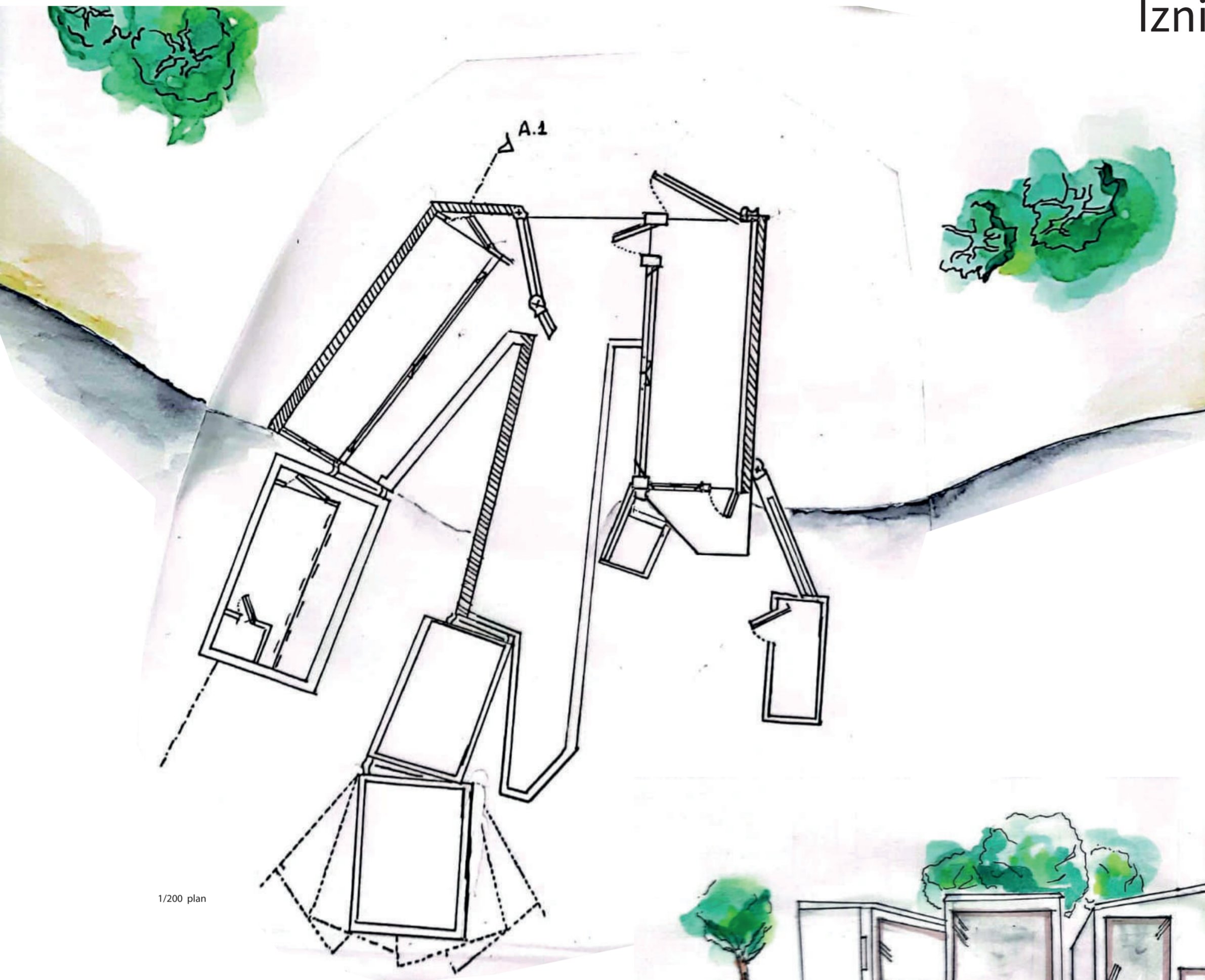
### Rhythm and space connection:

The space is designed to offer a rhythmic experience in harmony with the external environment. By analyzing the surrounding rhythms, a layered reflection is spatialized, and in this way, users both analyze the environmental rhythms and deepen this analysis with the integrity of the space. Materials such as metal and wood with different textures visually and audibly emphasize the rhythms created by moving parts and help users improve their perception of rhythm. The observation field offers the opportunity to consciously experience this rhythmic experience.



# Nicaea Rhythmcatcher

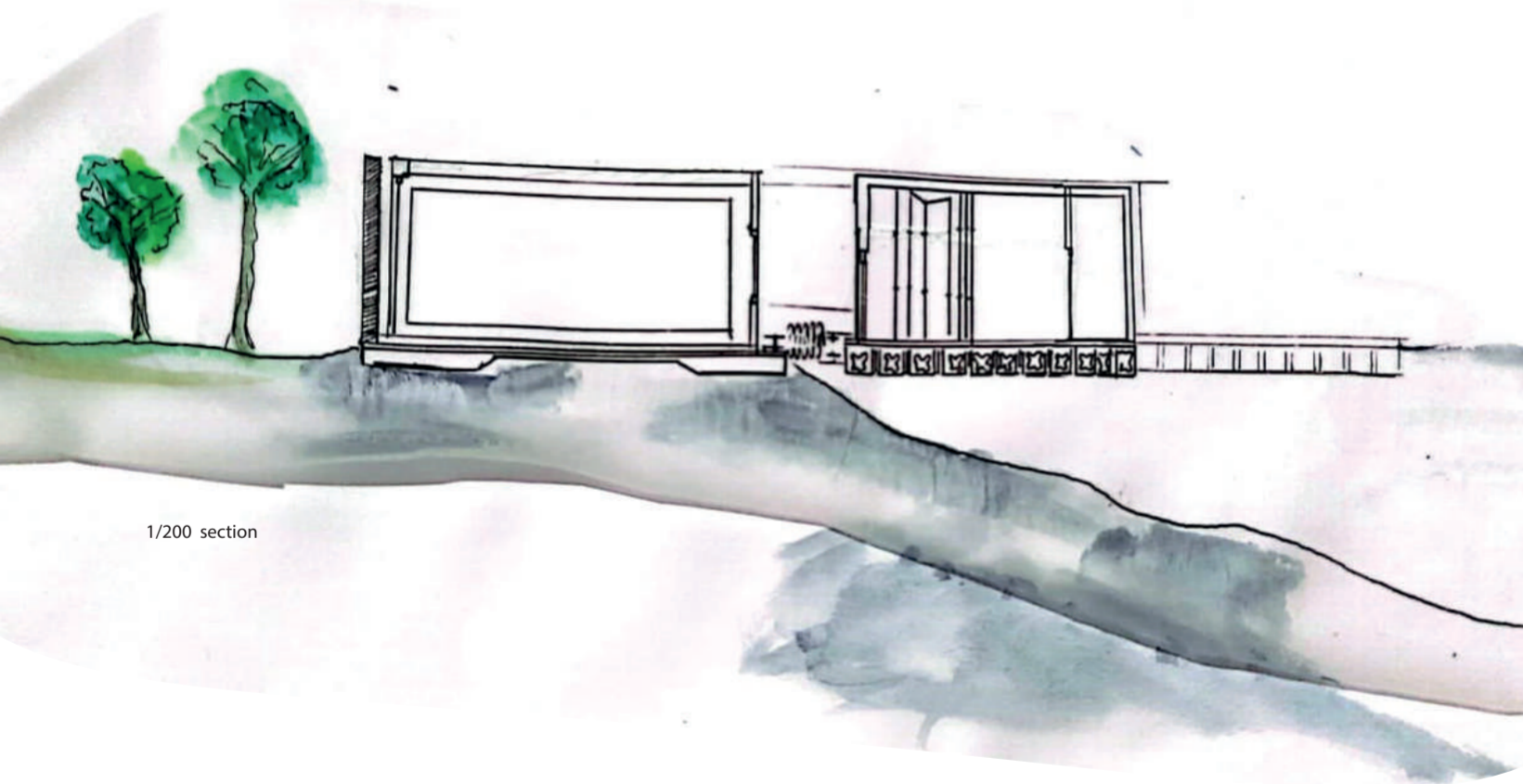
İzmit/Bursa



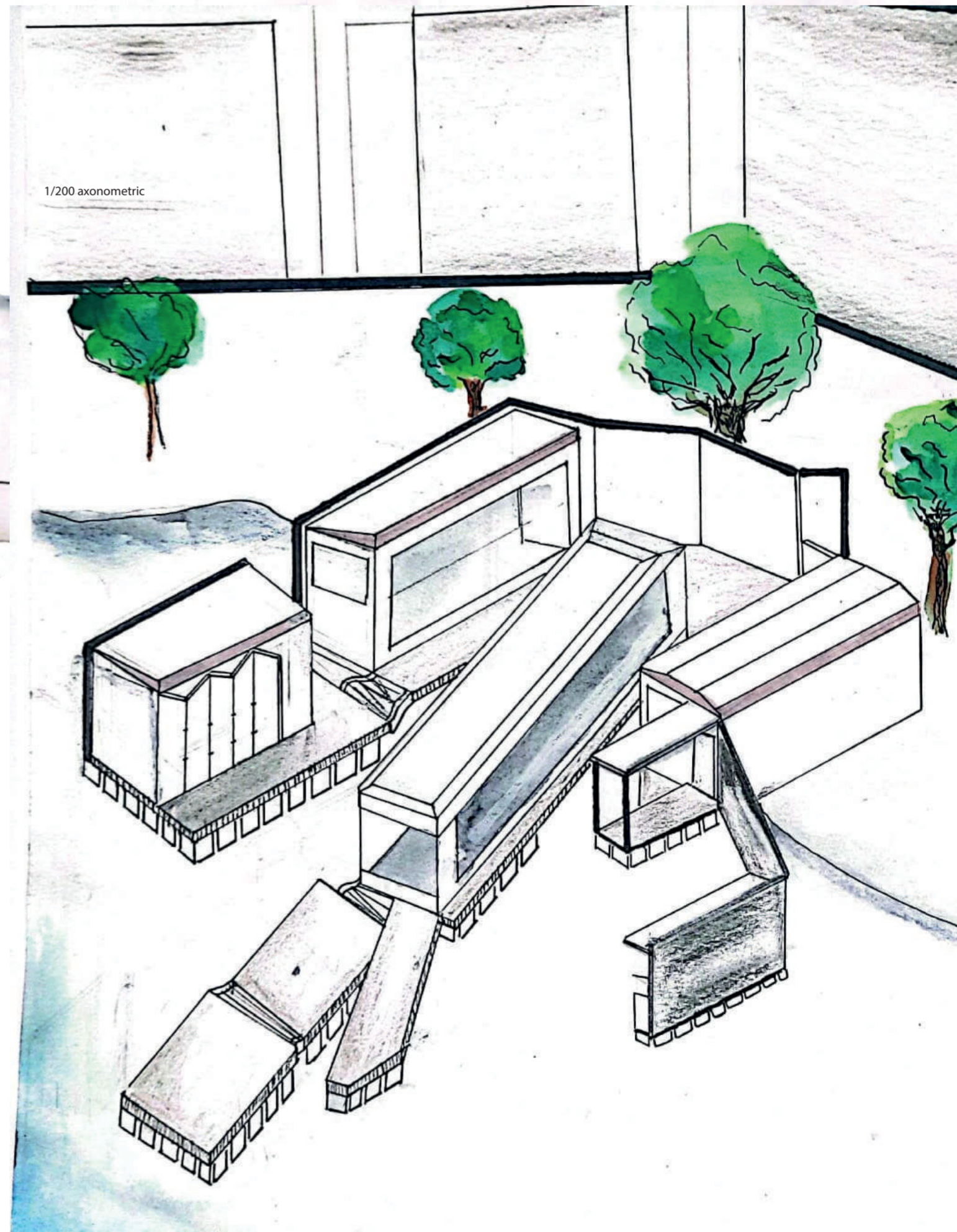
1/200 plan



1/200 view



1/200 section



1/200 axonometric

## Dynamic Venue Design:

The venue consists of two basic parts, a static structure firmly anchored in the ground (the fixed part) and a floating structure (the movable part), attached to the lake surface by pontoons. The fixed part forms the basis of the space and houses the main functions, while the movable part can be used for variable functions or used to create a flexible space. Both sections consist of materials and structural design selected according to durable and aesthetic criteria. Fixed and movable parts are designed to be integrated with each other, and this interaction contributes to the space gaining a dynamic and changing character.

## Analysis and function of spaces:

The venue includes a public stage and seating areas at the intersection of indoor and outdoor areas. In the background, there is an area where works produced with rhythms are exhibited. While the kitchen, wet area and warehouse are located on the left, there are open and closed studios for observation on the right. The closed studio is equipped with high-level sound insulation and is designed for rhythm training and reinforcement of achievements. Intermediate spaces that provide fluid circulation in moving spaces connect all functions together.