

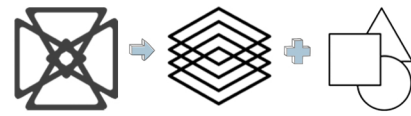
POLYPHENY: JOURNEY BETWEEN LAYERS



CONCEPTUAL APPROACH

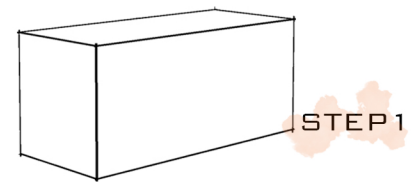
THE CITY PLANS OF THE REGION, WHICH HAS BEEN HOME TO MANY CIVILIZATIONS IN DIFFERENT HISTORICAL PROCESSES, HAVE BEEN EXAMINED AND THE 'MULTI-LAYER' RELATIONSHIP IN THE SOURCES HAS BECOME THE FOCAL POINT. THE CONCLUSION SENTENCE IS 'FROM THE LAYERS OF THE REGION TO THE LAYERS OF THE SPACE'.

POLPHENY: POLY+PHENY = MULTIPLE + LAYER



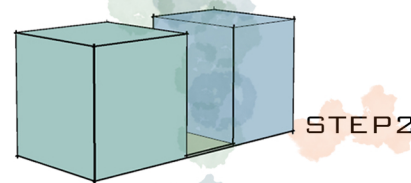
THE ABILITY TO CREATE DIFFERENT LAYERS FROM A SINGLE TEMPLATE.

DESIGN PROCESS



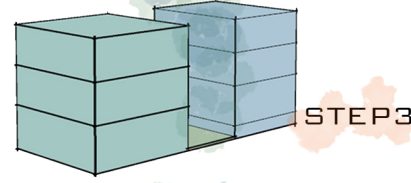
STEP 1

IN THE FIRST STEP, THE STRUCTURE OF THE BUILDING WAS ANALYZED. AND THE RECTANGULAR SHAPE OF THE BUILDING WAS CONSIDERED AS A **TEMPLATE**.



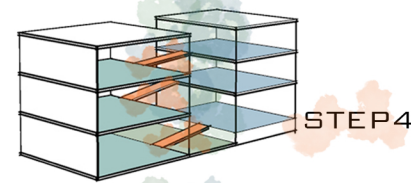
STEP 2

IN THE SECOND STEP, THE BUILDING WAS DIVIDED INTO **2 MAIN MASSES**. THUS, THE AREA IN THE MIDDLE WAS DESIGNED AS A GALLERY SPACE AND A GREEN AREA WAS CREATED.



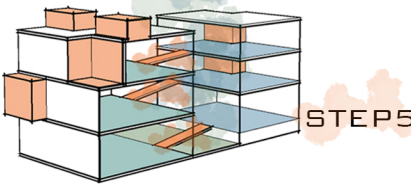
STEP 3

IN THE THIRD STEP, THE FLOOR HEIGHT CODES OF THE MAIN MASSES WERE PLAYED WITH. IN THIS WAY, THE RELATIONSHIP OF '**DIFFERENT LAYERS**' WAS CREATED.



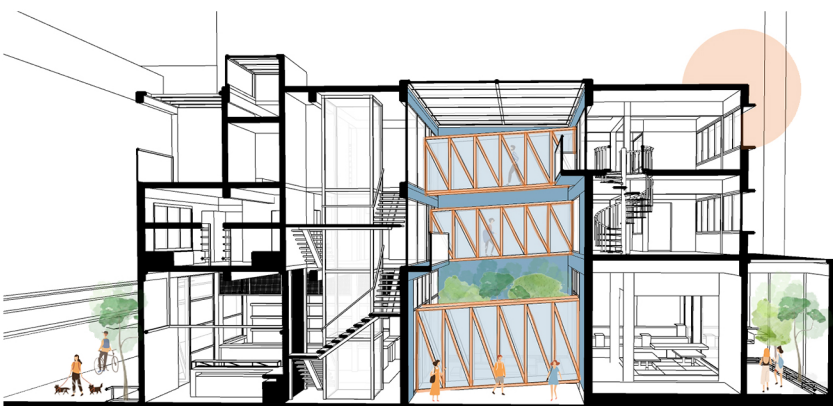
STEP 4

IN THE FOURTH STEP, RAMPS THAT CONNECTING THE DIFFERENT LAYERS WERE DESIGNED. IN THIS WAY, USERS WERE GIVEN THE OPPORTUNITY TO **JOURNEY BETWEEN LAYERS**.



STEP 5

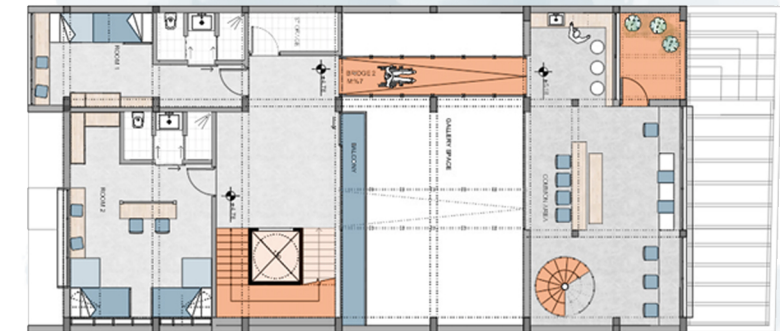
IN THE FIFTH STEP, **DYNAMISM** WAS CREATED ON THE FACADES BY OVERFLOWING AND RETRACTING SOME AREAS ON THE FACADES AND ROOF OF THE BUILDING.



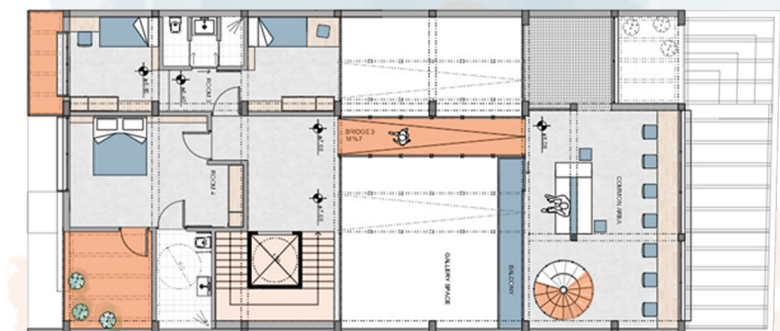
- RAL 2003
- RAL 5023
- RAL 9003
- MICRO CEMENTO
- LIGHT OAK WOOD
- TERRAZZO



GROUND FLOOR PLAN



FIRST FLOOR PLAN



SECOND FLOOR PLAN



MEZZANINE FLOOR PLAN

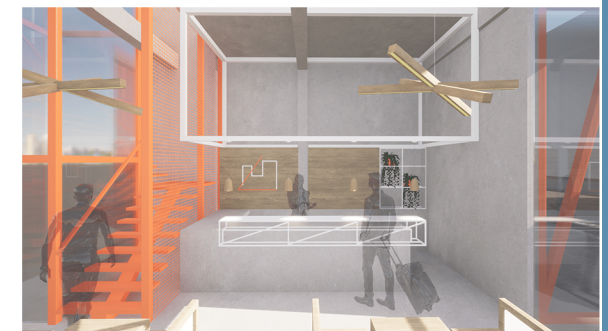


SECTION AA'

0 1 2 3 4 5 10M



EXTERIOR VIEW



RECEPTION



EATING AREA



PRESENTATION AREA



ACCOMMODATION AREA

C3301M

2ND YEAR STUDIO PROJECT - SPRING